



COMPANY PROFILE



— since 2012 —

A Name that you can rely & Trust.

About US

At Excel Green Tech Engineering Limited, we are passionate about powering progress and energizing excellence through sustainable electrical solutions. Established in [2012], we have evolved into a dynamic force in the field of electrical equipment and appliance installation, fixture fittings, connection, and commissioning.

Our Commitment to Sustainability

Our commitment to sustainability is at the heart of everything we do. We understand the critical role electricity plays in modern society, and we believe it's our responsibility to harness its power while minimizing its environmental impact. Our team of dedicated professionals is constantly exploring innovative technologies and practices that reduce energy consumption, lower carbon emissions, and promote a greener future.

A Tradition of Excellence

With a strong tradition of excellence, we have earned the trust of clients across various industries. Our projects span from powering large industrial facilities to enhancing the efficiency of commercial buildings. We take pride in delivering high-quality electrical solutions that meet and exceed industry standards.

Innovation at Our Core

Innovation is the driving force behind our success. We embrace cutting-edge technology and best practices to ensure that our clients receive the most efficient and reliable electrical installations. Our goal is to continually adapt and improve our services to stay ahead in a rapidly evolving industry.

Safety and Compliance

The safety of our team, clients, and the communities we serve is paramount. We adhere to strict safety protocols and regulatory standards in every project we undertake. Our commitment to safety ensures that our work not only performs flawlessly but also keeps people and property secure.

Join Us on the Journey

Excel Green Tech Engineering Limited invites you to join us on our journey toward a brighter and more sustainable future. Whether you are a business seeking efficient electrical solutions or a professional looking for an innovative and purpose-driven team, we are here to empower you.

Utility Solutions for Installation, Connection, and Commissioning:

Excel Green Tech Engineering Limited offers a wide range of utility solutions for the installation, connection, and commissioning of various critical electrical equipment and systems. Here's an expanded overview of the utility solutions you provide:

Substation: Our expertise extends to the installation, connection, and commissioning of substations, ensuring efficient power distribution and reliability.

Busbar Trunking System: We specialize in setting up busbar trunking systems, enabling efficient and flexible power distribution within buildings and industrial facilities.

Generator: Our team is proficient in installing generators, offering backup power solutions for uninterrupted operations during power outages.

Automatic Transfer Switch: We provide seamless installation and connection of automatic transfer switches, facilitating automatic switching between power sources during outages.

Automatic Voltage Regulator: Excel Green Tech Engineering Limited ensures the proper installation and commissioning of voltage regulators, maintaining stable voltage levels.

HVAC System: Our team is skilled in installing HVAC (Heating, Ventilation, and Air Conditioning) systems, ensuring comfort and air quality in various environments.

Circuit Breakers & Disconnect Switches: We handle the installation and connection of circuit breakers and disconnect switches, crucial for electrical safety and system protection.

Power Transformer: We specialize in the installation, connection, and commissioning of power transformers, optimizing energy distribution.

Metal Clad MV Cubicles: Our services include the setup and commissioning of metal-clad medium-voltage (MV) cubicles, enhancing electrical distribution reliability.

Multifunction Digital Units: We install and connect multifunction digital units, providing advanced control and monitoring capabilities for electrical systems.

Lightning Arrester: Lightning protection is paramount, and we offer installation and commissioning services for lightning arresters to safeguard infrastructure.

Monitoring & Control of Substation: We provide state-of-the-art solutions for monitoring and controlling substations, enabling real-time data analysis and control of critical electrical assets.

Residential & Commercial Building Solutions:

Electrical Sub-Station: We provide design, installation, and maintenance services for electrical sub-stations, ensuring safe and reliable power distribution within residential and commercial buildings.

Busbar Trunking System: Our experts are proficient in the installation and configuration of busbar trunking systems, optimizing electrical power distribution within buildings for efficiency and flexibility.

Power Management System: We offer power management solutions to monitor and control energy usage efficiently, reducing operational costs and environmental impact.

Lighting System Design & Control: Our team specializes in designing efficient lighting systems and implementing advanced control solutions, enhancing aesthetics, energy savings, and user comfort.

Building and Office Automation System: Excel Green Tech Engineering Limited integrates cutting-edge automation systems into residential and commercial buildings, offering convenience, security, and energy efficiency.

Electrical Wiring System: We provide high-quality electrical wiring solutions, ensuring safe and reliable power distribution throughout the building.

Surge Protective Device: We install surge protective devices to safeguard electrical systems and sensitive equipment from voltage surges, ensuring uninterrupted operation and equipment longevity.

Our commitment to excellence, safety, and sustainability underpins every project we undertake. Whether it's enhancing the lighting system, automating building functions, or ensuring reliable electrical distribution, we have the expertise and experience to meet the unique needs of residential and commercial properties.

Excel Green Tech Engineering Limited is your trusted partner in creating energy-efficient, secure, and comfortable living and working environments. For specific project inquiries or additional details about our services, please don't hesitate to contact us. We look forward to contributing to the success of your residential and commercial projects.

Industrial solutions

Excel Green Tech Engineering Limited offers a comprehensive range of industrial solutions to meet the diverse needs of industrial facilities. Here's an overview of our industrial services:

MV/LV Sub-Station up to 33KV

We specialize in the design, installation, and maintenance of medium-voltage (MV) and low-voltage (LV) substations up to 33KV, ensuring reliable and efficient power distribution for industrial facilities.

Lighting Power Busbar System

Excel Green Tech Engineering Limited designs and installs lighting power busbar systems, providing a reliable and flexible solution for industrial lighting needs.

Power Distribution

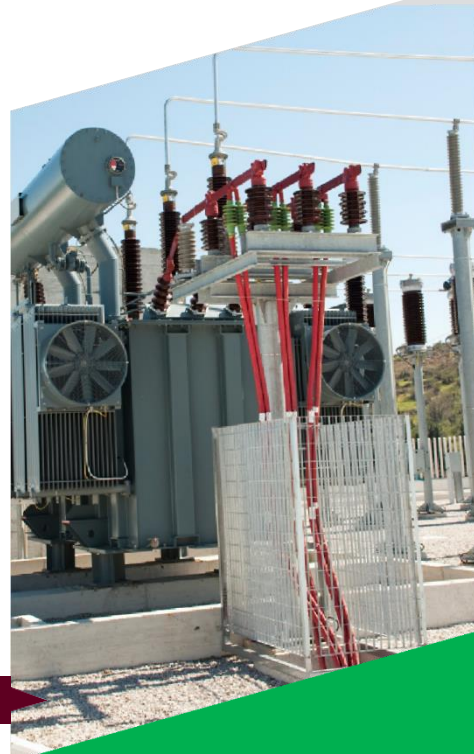
We excel in power distribution solutions that ensure the seamless delivery of electricity to various points within industrial plants, optimizing production processes., Viscosity and Wireless and Hart control.

Power Management

We offer power management solutions tailored to industrial applications, allowing for efficient energy usage, cost savings, and improved sustainability.

Metering, Protection & Industrial Automation System

Our experts provide advanced metering, protection, and industrial automation solutions to enhance the efficiency, safety, and control of industrial processes.



High Voltage Services

Here is the allocation of human resources for Excel Green Tech Engineering Limited across various departments

Management:

Number of Employees: 10.

Corporate:

Number of Employees: 15

Marketing & Sales:

Number of Employees: 10

Research & Development (R&D):

Number of Employees: 3

Installation & Commissioning:

Number of Employees: 50

After Sales Service:

Number of Employees: 5

Logistic Support:

Number of Employees: 5

Production:

Number of Employees: 40

Supply Chain Management:

Number of Employees: 3

This allocation of human resources reflects the distribution of employees across different departments within Excel Green Tech Engineering Limited. Each department plays a vital role in the company's overall success and contributes to its mission of providing innovative and sustainable solutions in the field of electrical engineering and infrastructure.




RECENT PROJECTS



Excel Green Tech Engineering Limited's Expertise in Dhaka Metro Rail Station Electrical Equipment Installation, Connection, and Commissioning

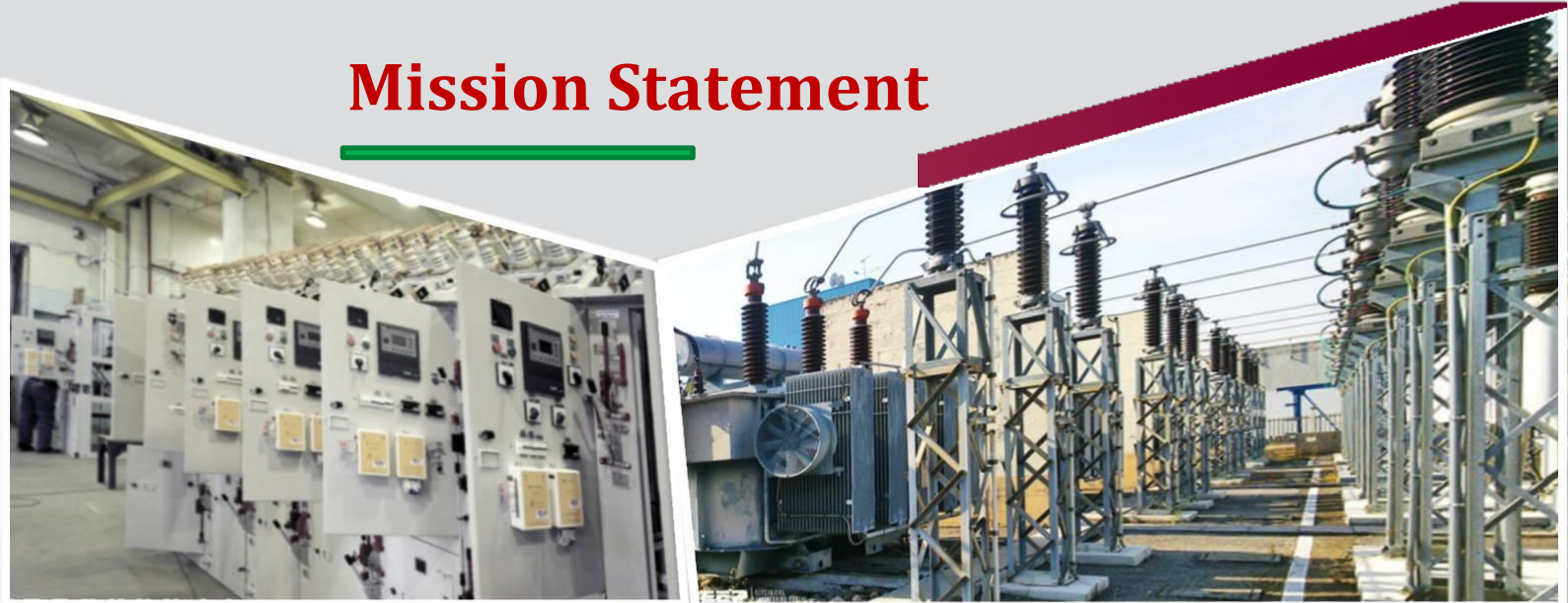
PROJECT OVERVIEW

In the dynamic landscape of modern transportation infrastructure, the Dhaka Metro Rail project stands as a beacon of progress for the bustling capital of Bangladesh. Excel Green Tech Engineering Limited, a distinguished player in the field of electrical engineering, has played a pivotal role in the installation, connection, and commissioning of critical electrical equipment for the Dhaka Metro Rail stations



Excel Green Tech Engineering Limited was entrusted with the crucial task of installing, connecting, and commissioning a wide range of electrical equipment and systems essential for the Dhaka Metro Rail stations.

Mission Statement



Our Code Values

Excellence:

We relentlessly pursue excellence in every aspect of our work, from project planning to execution. Our commitment to quality sets us apart, ensuring the longevity and reliability of the systems we install.

Client-Centric Approach:

We understand that our success is intertwined with the success of our clients. We listen, adapt, and collaborate closely to deliver solutions that align with our clients' goals and aspirations.

Innovation:

Embracing the spirit of innovation, we continually explore cutting-edge technologies and methodologies. This enables us to deliver forward-thinking solutions that address the evolving needs of our clients and the world.

Safety:

The safety of our employees, partners, and the communities we serve is non-negotiable. We maintain the highest safety standards, implementing rigorous measures to prevent accidents and ensure the well-being of all stakeholders.

Sustainability:

We are passionate about minimizing our environmental footprint. Our solutions prioritize energy efficiency, reduced waste, and responsible resource management, reflecting our commitment to a greener, more sustainable future.

DR Tower

Box Culvert Road



Our primary clients include

Project overview Type

Commercial and industrial enterprises
Construction companies and contractors
Facility managers and building owners
Renewable energy projects requiring electrical expertise

project Name

- Dhaka Metro Rail Station
- DR Tower
- Hossain Tower
- Jed Square
- Israt Tower
- PKSF
- Palton Tower
- Hakkani sabaddha Mosque



Our Team

Our team at Excel Green Tech Engineering Ltd is more than just skilled professionals; we are visionaries who turn dreams into reality through the power of electrical engineering. With a passion for precision and an unwavering commitment to innovation, we are the driving force behind your electrical success.

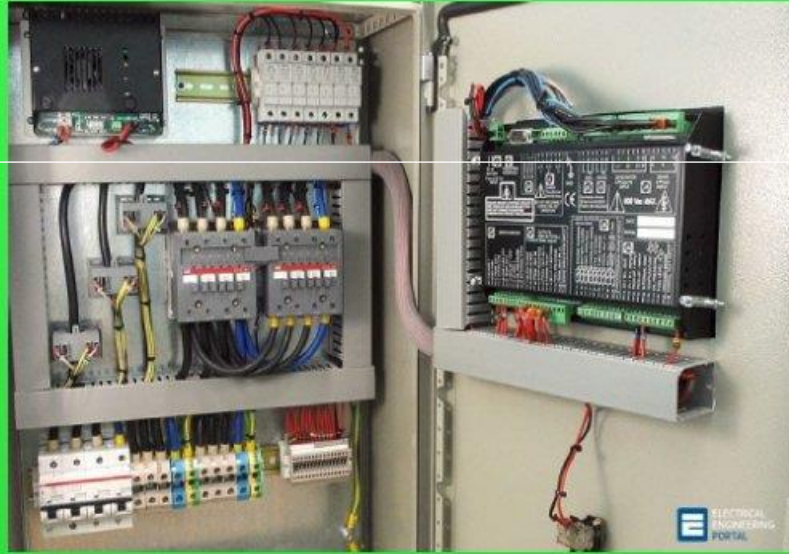
In a world where reliability is paramount, we are the architects of rock-solid foundations. We thrive on challenges, turning every project into an opportunity to showcase our expertise and dedication. From intricate installations to seamless connections, we ensure that power flows smoothly, lighting up your path to success.

As you navigate the electrifying journey ahead, remember that Excel Green Tech Engineering Ltd is your trusted partner, ready to energize your projects with precision and excellence. Together, let's power a brighter future.

Major Electrical Equipment's



HT Switchgear



Electrical Control Panel



AVR



HVAC System



BBT



Generator

Excel Green Tech Engineering Ltd.

company trade license

ঢাকা দক্ষিণ সিটি কর্পোরেশন

www.dsc.gov.bd



লাইসেন্স ইস্যুর বিবরণ

ই-ট্রেড লাইসেন্স

ইস্যুর তারিখ : 18/07/2023

ইস্যুর সময় : 16:56:54

লাইসেন্স নং : TRAD/DSCC/038238/2022

স্থানীয় সরকার (সিটি কর্পোরেশন) আইন, ২০০৯ (২০০৯ সনের ৬০ নং আইন) এর ধারা ৮৪-তে প্রদত্ত ক্ষমতাবলে সরকার প্রণীত আদর্শ কর তফসিল, ২০১৬ এর ১০ অনুচ্ছেদ অনুযায়ী ব্যবসা, বৃত্তি, পেশা বা শিল্প প্রতিষ্ঠানের উপর আরোপিত কর আদায়ের লক্ষ্যে নিম্নবর্ণিত ব্যক্তি/প্রতিষ্ঠানের আনুকূলে অত্র ট্রেড লাইসেন্সটি ইস্যু করা হলো।

১। ব্যবসা প্রতিষ্ঠানের নাম	:	এক্সেল গ্রীন টেক ইঞ্জিনিয়ারিং লিঃ	
২। প্রতিষ্ঠানের মালিকের নাম	:	মোঃ আনোয়ার হোসেন (এম ডি)	
৩। পিতা / স্বামীর নাম	:	মৃতঃ ইয়াছিন আলী	
৪। মাতার নাম	:	কাজেরী বেওয়া	
৫। ব্যবসার প্রকৃতি	:	লিমিটেড কোম্পানী	
৬। ব্যবসার ধরণ	:	ইলেকট্রিক্যাল এন্ড ইলেকট্রনিক্স ইঞ্জিনিয়ারিং ওয়ার্কশপ	
৭। প্রতিষ্ঠানের ঠিকানা	:	৭৯/১/এ, কাকরাইল ডি আই পি রোড রমনা (৪র্থ তলা) ঢাকা	
৮। অঞ্চল / বাজার শাখা	:	১	ওয়ার্ড / মার্কেট:
এলাকা	:	-	১৯
৯। এনআইডি/পাসপোর্ট/জন্ম নিব: নং	:		বিআইএন নং:
ফোন	:	০১৭১১১৬৫৪২১	ই-মেইল:
			exeanwar@mail.com
১০। অর্থ বছর	:	২০২৩-২০২৪ (নিবায়নকৃত)	ব্যবসা শুরুর তারিখ:
১১। মালিকের বর্তমান ঠিকানা	:		১০/০৭/২০২৩
হোল্ডিং নং	:	৭৯/১/এ	মালিকের স্থায়ী ঠিকানা
রোড নং	:		হোল্ডিং নং
গ্রাম / মহল্লা	:	কাকরাইল ডি আই পি রোড	রোড নং
পোস্টকোড	:	শান্তিনগর-১২১৭	গ্রাম / মহল্লা
থানা	:	রমনা	পোস্টকোড
জেলা	:	ঢাকা	থানা
বিভাগ	:	ঢাকা	জেলা
			বিভাগ
১২। ট্রেড লাইসেন্স/নিবায়ন ফি (বার্ষিক)	:		
লাইসেন্স/নিবায়ন ফি	:	৭৫০০	সাইনবোর্ড কর
সারচার্জ	:	০	ভ্যাট
আয়কর / উৎসেকর	:	৩০০০	ফর্ম ফি
বকেয়া ()	:	০	
সংশোধনী ফি	:	০.০০	সর্বমোট
			১৬০০
			১৩৬৫
			৫০
			১৩৫১৫.০০

অত্র ট্রেড লাইসেন্স এর মেয়াদ ৩০ শে জুন, ২০২৪ পর্যন্ত

লাইসেন্স ও বিজ্ঞাপন সুপারভাইজার



কর কর্মকর্তা

Excel Green Tech Engineering Ltd.

company Certificate

Issue No. 353549 Date: 02/03/2023



Certificate of Incorporation (under Act XVIII of 1994)

No. C-187373/2023

*I hereby certify that **EXCEL GREENTECH ENGINEERING LTD.** is this day incorporated under the Companies Act (Act XVIII) of 1994 and that the Company is Limited.*

*Given under my hand at **Dhaka** this **Second** day of **March** two thousand and **twenty-three**.*

*By order of
Registrar*

*Assistant Registrar
Registrar of Joint Stock Companies & Firms
Bangladesh*



N.B. This certificate is digitally signed. Please find the soft copy to verify the signature.

Excel Green Tech Engineering Ltd.

company Tax Certificate



**Government of the People's Republic of Bangladesh
National Board of Revenue**

Mushak-2.3

Customs, Excise and VAT Commissionerate, Dhaka (South)
Shegunbagicha Division

Value Added Tax Registration Certificate

This is to certify that the person whose details are given below is registered under Value Added Tax and Supplementary Duty Act, 2012 (Act No. 47 of 2012)

BIN : 005496598-0208

Name of the Entity	: EXCEL GREENTECH ENGINEERING LTD.
Trading Brand Name	: N/A
Old BIN	: N/A
e-TIN	: 713983227671
Address	: 79/1/A Kakrail VIP Road Dhaka; Ramna PS; Dhaka-1217; Bangladesh
Issue Date	: 04/04/2023
Effective Date	: 04/2023
Type of Ownership	: Private Limited
Major Area of Economic Activity	: Services



This is a system generated certificate and doesn't require any signature

Excel Green Tech Engineering Ltd.

company TIN Certificate



Government of the People's Republic of Bangladesh

National Board of Revenue

Taxpayer's Identification Number (TIN) Certificate

TIN : 713983227671

This is to Certify that **EXCEL GREENTECH ENGINEERING LTD.** is a Registered Taxpayer of National Board of Revenue under the jurisdiction of **Taxes Circle-184 (Company)**, Taxes Zone **09, Dhaka**.

Taxpayer's Particulars :

- 1) Name : **EXCEL GREENTECH ENGINEERING LTD.**
- 2) Registered Address/Permanent Address : **79/1/A (3rd Floor), Kakrail, VIP Road, Paltan, Dhaka, PO : 1000, Bangladesh**
- 3) Current Address : **Shibpur, Pachuria, Chatmohar, Pabna, PO : 6630**
- 4) Previous TIN : **Not Applicable**
- 5) Status : **Company**

Date : March 16, 2023

Please Note:

1. A Taxpayer is liable to file the Return of Income under section 75 of the Income Tax Ordinance, 1984.
2. Failure to file Return of Income under section 75 is liable to-
 - (a) Penalty under section 124; and
 - (b) Prosecution under section 164 of the Income Tax Ordinance, 1984.



Deputy Commissioner of Taxes
Taxes Circle-184 (Company)
Taxes Zone 09, Dhaka
Address : 32, Garib-E-Newaz Avenue (5th floor), Sector-13,
Uttara, Dhaka. Phone : 02-48961022

N. B: This is a system generated certificate and requires no manual signature.



Excel Green Tech Engineering Limited

Office Address:

House: 79/1/A, Kakrail, VIP Road, Ramna PS
Dhaka – 1217, Bangladesh
Cell no : 01711-165421, 01711-451874
E-mail: info@excelgtel.com
Website: www.excelgtel.com